

PRINTABLE INFO SHEET

Series: Rockbridge Modular Homes
Model: RV109A Rockbridge Elite 1



About This Model

Style: Ranch / Bedrooms: 3 / Bathrooms: 2 / Square Feet: 1732

CUSTOMER CONTACT

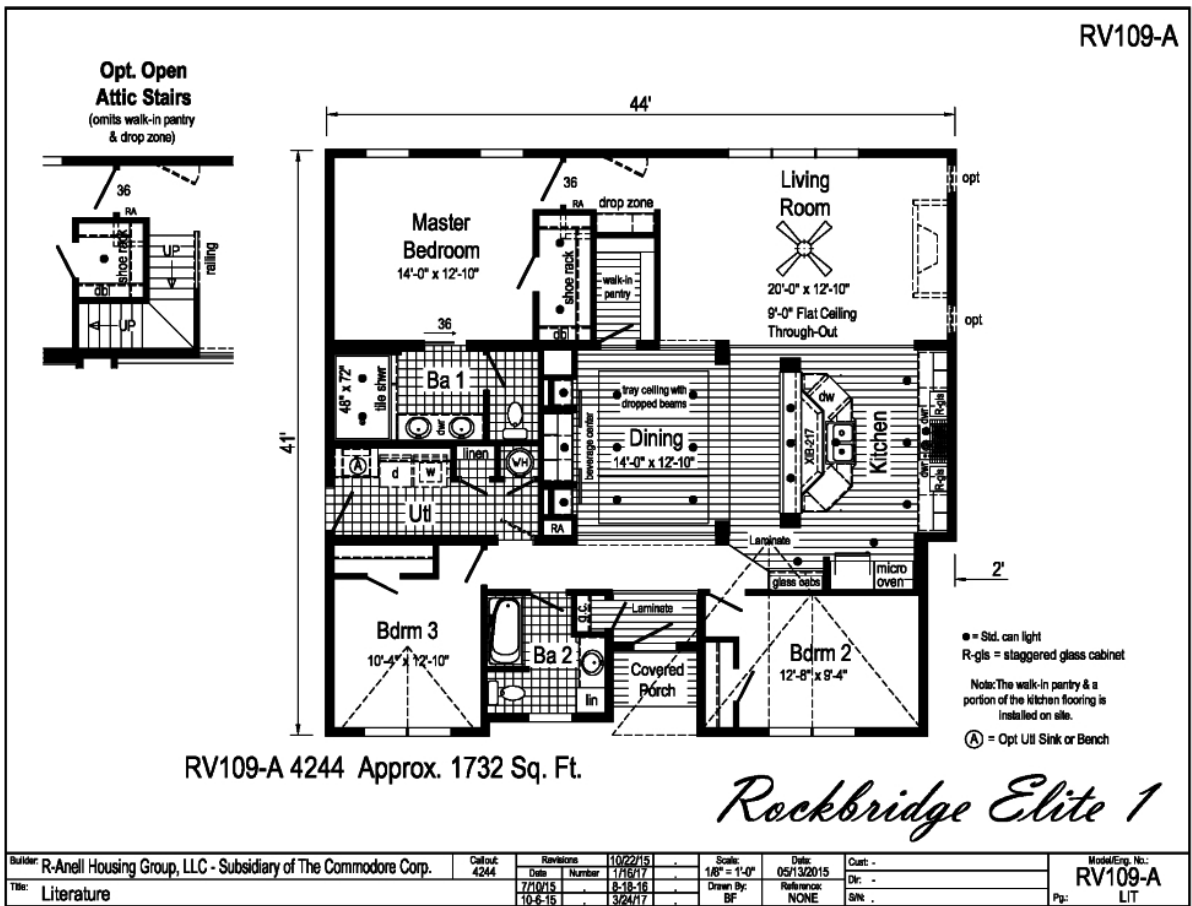
Notes:

PRINTABLE INFO SHEET

Series: Rockbridge Modular Homes
 Model: RV109A Rockbridge Elite 1



Floorplan



CUSTOMER CONTACT

Notes: _____

PRINTABLE INFO SHEET



Series: Rockbridge Modular Homes

Model: RV109A Rockbridge Elite 1

Standards & Features

INTERIOR

Primed Smooth Drywall Throughout
Flat Ceiling Throughout
Stipple Ceiling
8'0" Ceiling Height
Carpet with ShawGuard Carpet Protector
Rebond Carpet Pad
Tackstrip Carpet Installation
Entry Foyer with Vinyl Flooring
No-Wax Vinyl Floor Coverings by Congoleum
Langford 3-Arm Dining Room Light
Alabaster Glass Pendant Nook Light
Glass Light Shades Throughout
3 1/4" Window & Door Trim
6-Panel Pre-Hung Doors with Mortise Hinges
White Painted Mouldings Throughout
Metal Interior Passage Sets
Floor Mount Door Stops
Smoke Detectors with Battery Back-Up
Wire Shelving in Guest Closet & Utility Room
2" Window Blinds Throughout
Nailed on Switch and Recept. Boxes
Laminate Countertops with Laminate Edging
4" Laminate Backsplash
CABINETRY
Evermore Custom Cabinetry (KCMA Certified)

INTERIOR (continued)

Hardwood Mission Cabinet Doors with Full Overlay
Hardwood Cabinet Face Frames
Brushed Nickel Cabinet Hardware
Concealed Cabinet Hinges
Crown Moulding on Wall Cabinets
30"/36" Staggered Wall Cabinets
Adjustable Shelves in Wall Cabinets
Undermount Drawer Guides with Dovetail Drawers
Adjustable Center Shelf in Base Cabinets
36" High Bath Vanities with Base Shelf
KITCHEN
Stainless Steel Sink - 33x22x8
Huntington Brass Nickel Single Lever Faucet
USB Receptacle
Deluxe Free-Standing Electric Range
Power Range Hood with Light
18 Cubic Foot, No-Frost Refrigerator
Island with Stile Framed Panels on Sides & Backs
BATHS
60" One-Piece Fiberglass Tub/Showers with Ceramic Tile Edge
One-Piece Fiberglass Shower with Ceramic Tile Edge and a Glass Door in Glamour Baths
Fiberglass Soaker Tub In Glamour Baths
Tub Overflows
End Drain on Tubs/Showers

CUSTOMER CONTACT

Notes: _____

PRINTABLE INFO SHEET



Series: Rockbridge Modular Homes

Model: RV109A Rockbridge Elite 1

Standards & Features (continued)

INTERIOR (continued)

- 1.6 Gallon Per Flush Elongated Toilets
 - China Stool, Tank & Lid
 - China Sinks with Overflows and Pop-Up Drains
 - Lighted Vent Fan in Each Bath
 - Huntington Brass Nickel Faucets
 - Anti-Scald Valves on Showers & Tubs
 - Langford 2- Arm Vanity Light
 - Privacy Lock Sets in all Bathrooms
- ### BEDROOMS
- Ceiling Lights
 - Egress Window Each Bedroom
 - Double Wire Shelves with Shoe Racks in All Walk-In Closets
 - Wire Shelving in Secondary Closets
 - 30" Interior Passage Doors
 - Switched Recessed 4" LED Light in All Walk-In Closets
 - Privacy Lock Sets in all Bedrooms

UTILITIES

- 200 AMP Electrical Service
- Arc Fault Circuit Breakers
- Plumb and Wire for Washer
- Wire and Vent for Dryer
- 40 Gallon Electric Water Heater with Pan
- Air Ready Electric Furnace
- Six Panel Furnace Door
- Perimeter Heat, Fiberglass Ducts, & Return Air System
- Copper Wiring Throughout

UTILITIES (continued)

- Main Water Line Shut-Off Valve
- Water Shut-Off Valves Where Accessible
- One Exterior Water Faucet
- Recessed Dryer Vent Box - Where Available
- Uponer Plumbing Connections
- Drain & Gas Lines Stubbed Through Floor
- Complete Heat System
- Ceiling Jumper Box HVAC Return Air System

INSULATION

- R-19 Fiberglass Insulation in Floor
- R-19 Fiberglass Insulation in Walls
- R-31 Avg. Blown Insulation in Ceiling

EXTERIOR

- Patina Lantern Light at Front & Rear Door
- Two GFI-Protected Exterior Receptacles
- Vinyl Dutch Lap Siding
- O.S.B. Sheathing Under Siding
- 5/12 Roof Pitch
- 10" or 12" Overhangs & Eaves (Depending on Model)
- Architectural Shingles
- Ridgevent Roof Ventilation System
- 38x82 Fiberglass 6-Panel Front Door with Dead Bolt
- 38x82 9-Lite Fiberglass Rear Door with Dead Bolt
- Vinyl Insulated Windows with Low-E Glass
- 15" Raised Panel Shutters on Front

CUSTOMER CONTACT

Notes:

PRINTABLE INFO SHEET



Series: Rockbridge Modular Homes

Model: RV109A Rockbridge Elite 1

Standards & Features (continued)

EXTERIOR (continued)

Door Side

Wind Wrap

Vapor Barrier

CONSTRUCTION

2x10 Transverse Floor System on

16" Centers with 3/4" T&G O.S.B.

Floor Decking**

Toilet Riser in Wall

2x6 Exterior Walls on 16" Centers**

2x4 Interior Walls

2x4 Marriage Walls

82 1/2" Window Headers

90 MPH Exposure B Wind Load

20# Roof Load Design

Virginia Built Homes

R-30 Fiberglass Insulation in Floor

R-19 Fiberglass Insulation in Wall

R-38 Avg. Blown Insulation in Ceiling

Foam Gaskets at Switches & Receptacles
on Exterior Walls

Insulated Hot Water Lines

Deleted Factory Installed Heat Ducts
and Boots

**Spacing for Framing Members may vary due to Design
Requirements

CUSTOMER CONTACT

Notes:
