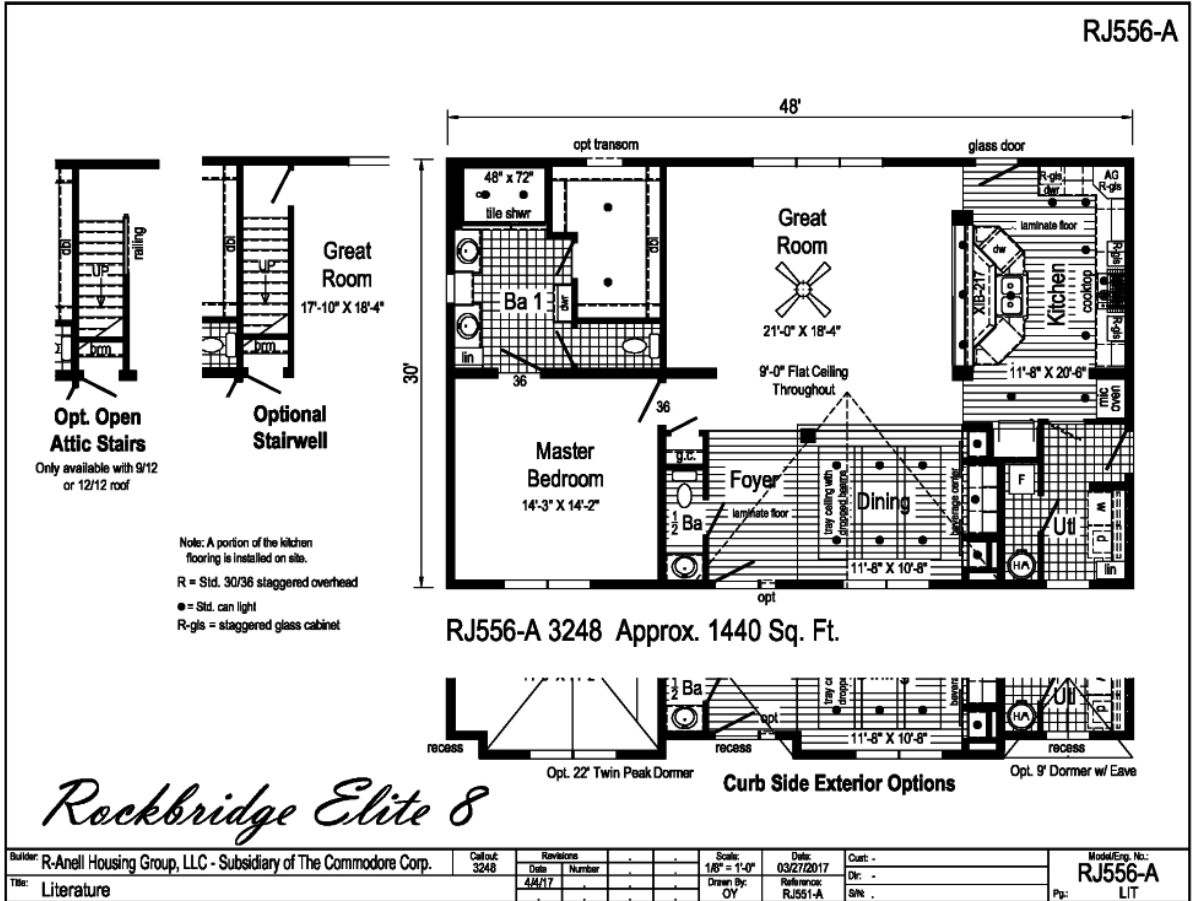


# PRINTABLE INFO SHEET



Series: Rockbridge Modular Homes  
 Model: RJ556A Rockbridge Elite 8



## About This Model

Style: Ranch / Bedrooms: 1 / Bathrooms: 1 / Square Feet: 1440

## CUSTOMER CONTACT

Notes: \_\_\_\_\_

\_\_\_\_\_

\_\_\_\_\_

\_\_\_\_\_

# PRINTABLE INFO SHEET



Series: Rockbridge Modular Homes

Model: RJ556A Rockbridge Elite 8

## Standards & Features

### INTERIOR

Primed Smooth Drywall Throughout  
 Flat Ceiling Throughout  
 Stipple Ceiling  
 8'0" Ceiling Height  
 Carpet with ShawGuard Carpet Protector  
 Rebond Carpet Pad  
 Tackstrip Carpet Installation  
 Entry Foyer with Vinyl Flooring  
 No-Wax Vinyl Floor Coverings by Congoleum  
 Langford 3-Arm Dining Room Light  
 Alabaster Glass Pendant Nook Light  
 Glass Light Shades Throughout  
 3 1/4" Window & Door Trim  
 6-Panel Pre-Hung Doors with Mortise Hinges  
 White Painted Mouldings Throughout  
 Metal Interior Passage Sets  
 Floor Mount Door Stops  
 Smoke Detectors with Battery Back-Up  
 Wire Shelving in Guest Closet & Utility Room  
 2" Window Blinds Throughout  
 Nailed on Switch and Recept. Boxes  
 Laminate Countertops with Laminate Edging  
 4" Laminate Backsplash  
**CABINETRY**  
 Evermore Custom Cabinetry (KCMA Certified)

### INTERIOR (continued)

Hardwood Mission Cabinet Doors with Full Overlay  
 Hardwood Cabinet Face Frames  
 Brushed Nickel Cabinet Hardware  
 Concealed Cabinet Hinges  
 Crown Moulding on Wall Cabinets  
 30"/36" Staggered Wall Cabinets  
 Adjustable Shelves in Wall Cabinets  
 Undermount Drawer Guides with Dovetail Drawers  
 Adjustable Center Shelf in Base Cabinets  
 36" High Bath Vanities with Base Shelf  
**KITCHEN**  
 Stainless Steel Sink - 33x22x8  
 Huntington Brass Nickel Single Lever Faucet  
 USB Receptacle  
 Deluxe Free-Standing Electric Range  
 Power Range Hood with Light  
 18 Cubic Foot, No-Frost Refrigerator  
 Island with Stile Framed Panels on Sides & Backs  
**BATHS**  
 60" One-Piece Fiberglass Tub/Showers with Ceramic Tile Edge  
 One-Piece Fiberglass Shower with Ceramic Tile Edge and a Glass Door in Glamour Baths  
 Fiberglass Soaker Tub In Glamour Baths  
 Tub Overflows  
 End Drain on Tubs/Showers

## CUSTOMER CONTACT

Notes: \_\_\_\_\_  
 \_\_\_\_\_  
 \_\_\_\_\_  
 \_\_\_\_\_

# PRINTABLE INFO SHEET



Series: Rockbridge Modular Homes

Model: RJ556A Rockbridge Elite 8

## Standards & Features (continued)

### INTERIOR (continued)

- 1.6 Gallon Per Flush Elongated Toilets
  - China Stool, Tank & Lid
  - China Sinks with Overflows and Pop-Up Drains
  - Lighted Vent Fan in Each Bath
  - Huntington Brass Nickel Faucets
  - Anti-Scald Valves on Showers & Tubs
  - Langford 2- Arm Vanity Light
  - Privacy Lock Sets in all Bathrooms
- ### BEDROOMS
- Ceiling Lights
  - Egress Window Each Bedroom
  - Double Wire Shelves with Shoe Racks in All Walk-In Closets
  - Wire Shelving in Secondary Closets
  - 30" Interior Passage Doors
  - Switched Recessed 4" LED Light in All Walk-In Closets
  - Privacy Lock Sets in all Bedrooms

### UTILITIES

- 200 AMP Electrical Service
- Arc Fault Circuit Breakers
- Plumb and Wire for Washer
- Wire and Vent for Dryer
- 40 Gallon Electric Water Heater with Pan
- Air Ready Electric Furnace
- Six Panel Furnace Door
- Perimeter Heat, Fiberglass Ducts, & Return Air System
- Copper Wiring Throughout

### UTILITIES (continued)

- Main Water Line Shut-Off Valve
- Water Shut-Off Valves Where Accessible
- One Exterior Water Faucet
- Recessed Dryer Vent Box - Where Available
- Uponer Plumbing Connections
- Drain & Gas Lines Stubbed Through Floor
- Complete Heat System
- Ceiling Jumper Box HVAC Return Air System

### INSULATION

- R-19 Fiberglass Insulation in Floor
- R-19 Fiberglass Insulation in Walls
- R-31 Avg. Blown Insulation in Ceiling

### EXTERIOR

- Patina Lantern Light at Front & Rear Door
- Two GFI-Protected Exterior Receptacles
- Vinyl Dutch Lap Siding
- O.S.B. Sheathing Under Siding
- 5/12 Roof Pitch
- 10" or 12" Overhangs & Eaves (Depending on Model)
- Architectural Shingles
- Ridgevent Roof Ventilation System
- 38x82 Fiberglass 6-Panel Front Door with Dead Bolt
- 38x82 9-Lite Fiberglass Rear Door with Dead Bolt
- Vinyl Insulated Windows with Low-E Glass
- 15" Raised Panel Shutters on Front

## CUSTOMER CONTACT

Notes:

---

---

---

---

# PRINTABLE INFO SHEET



Series: Rockbridge Modular Homes

Model: RJ556A Rockbridge Elite 8

## Standards & Features (continued)

### EXTERIOR (continued)

Door Side

Wind Wrap

Vapor Barrier

### CONSTRUCTION

2x10 Transverse Floor System on

16" Centers with 3/4" T&G O.S.B.

Floor Decking\*\*

Toilet Riser in Wall

2x6 Exterior Walls on 16" Centers\*\*

2x4 Interior Walls

2x4 Marriage Walls

82 1/2" Window Headers

90 MPH Exposure B Wind Load

20# Roof Load Design

### Virginia Built Homes

R-30 Fiberglass Insulation in Floor

R-19 Fiberglass Insulation in Wall

R-38 Avg. Blown Insulation in Ceiling

Foam Gaskets at Switches & Recept  
on Exterior Walls

Insulated Hot Water Lines

Deleted Factory Installed Heat Ducts  
and Boots

\*\*Spacing for Framing Members may vary due to Design  
Requirements

## CUSTOMER CONTACT

Notes:

---

---

---

---