

## PRINTABLE INFO SHEET

Series: Rockbridge Modular Homes  
Model: RY504A Rockbridge Elite 4



## About This Model

Style: Ranch / Bedrooms: 3 / Bathrooms: 2 / Square Feet: 2223

## CUSTOMER CONTACT

Notes:

---

---

---

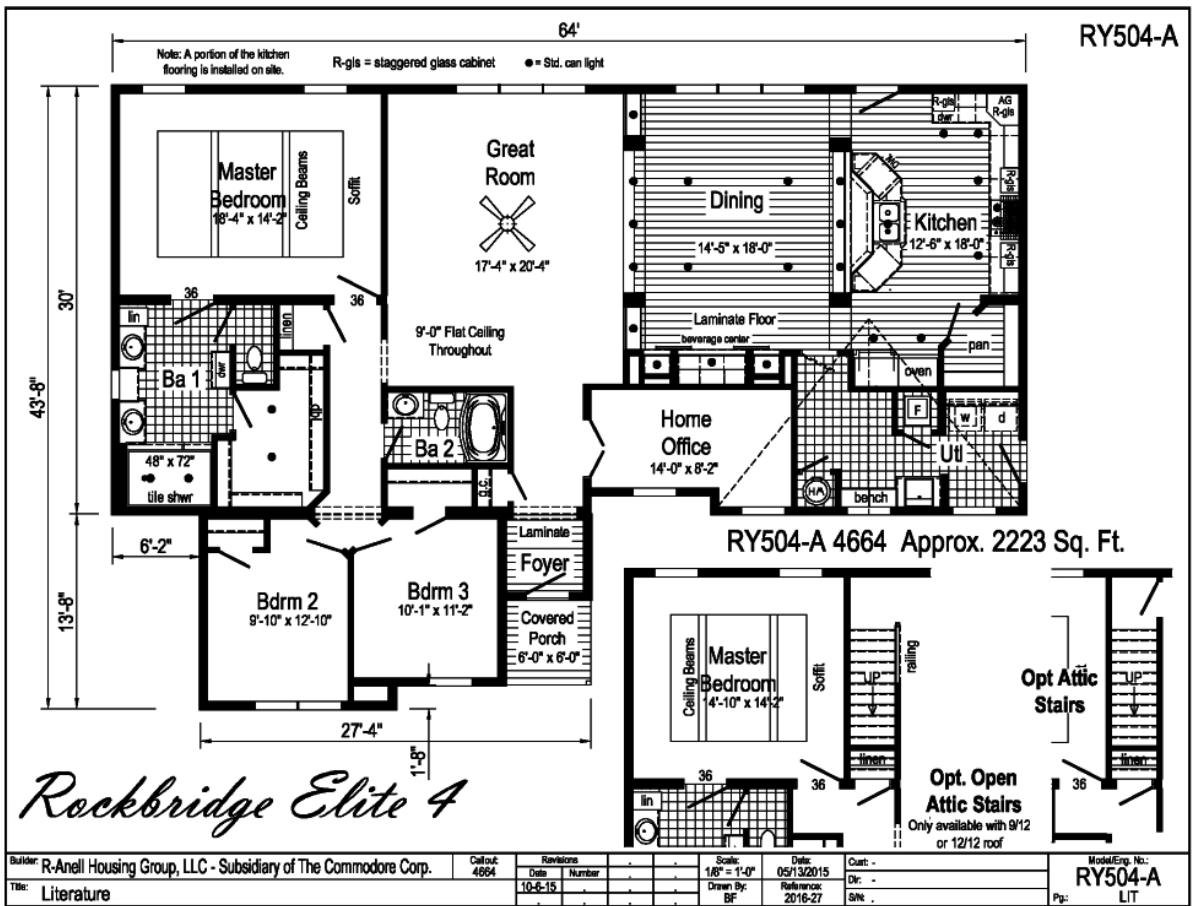
---

# PRINTABLE INFO SHEET



Series: Rockbridge Modular Homes  
 Model: RY504A Rockbridge Elite 4

## Floorplan



## CUSTOMER CONTACT

Notes: \_\_\_\_\_

\_\_\_\_\_

\_\_\_\_\_

\_\_\_\_\_

# PRINTABLE INFO SHEET



**Series: Rockbridge Modular Homes**

**Model: RY504A Rockbridge Elite 4**

## Standards & Features

### INTERIOR

Primed Smooth Drywall Throughout  
Flat Ceiling Throughout  
Stipple Ceiling  
8'0" Ceiling Height  
Carpet with ShawGuard Carpet Protector  
Rebond Carpet Pad  
Tackstrip Carpet Installation  
Entry Foyer with Vinyl Flooring  
No-Wax Vinyl Floor Coverings by Congoleum  
Langford 3-Arm Dining Room Light  
Alabaster Glass Pendant Nook Light  
Glass Light Shades Throughout  
3 1/4" Window & Door Trim  
6-Panel Pre-Hung Doors with Mortise Hinges  
White Painted Mouldings Throughout  
Metal Interior Passage Sets  
Floor Mount Door Stops  
Smoke Detectors with Battery Back-Up  
Wire Shelving in Guest Closet & Utility Room  
2" Window Blinds Throughout  
Nailed on Switch and Recept. Boxes  
Laminate Countertops with Laminate Edging  
4" Laminate Backsplash  
CABINETRY  
Evermore Custom Cabinetry (KCMA Certified)

### INTERIOR (continued)

Hardwood Mission Cabinet Doors with Full Overlay  
Hardwood Cabinet Face Frames  
Brushed Nickel Cabinet Hardware  
Concealed Cabinet Hinges  
Crown Moulding on Wall Cabinets  
30"/36" Staggered Wall Cabinets  
Adjustable Shelves in Wall Cabinets  
Undermount Drawer Guides with Dovetail Drawers  
Adjustable Center Shelf in Base Cabinets  
36" High Bath Vanities with Base Shelf  
KITCHEN  
Stainless Steel Sink - 33x22x8  
Huntington Brass Nickel Single Lever Faucet  
USB Receptacle  
Deluxe Free-Standing Electric Range  
Power Range Hood with Light  
18 Cubic Foot, No-Frost Refrigerator  
Island with Stile Framed Panels on Sides & Backs  
BATHS  
60" One-Piece Fiberglass Tub/Showers with Ceramic Tile Edge  
One-Piece Fiberglass Shower with Ceramic Tile Edge and a Glass Door in Glamour Baths  
Fiberglass Soaker Tub In Glamour Baths  
Tub Overflows  
End Drain on Tubs/Showers

## CUSTOMER CONTACT

Notes: \_\_\_\_\_  
\_\_\_\_\_  
\_\_\_\_\_  
\_\_\_\_\_

# PRINTABLE INFO SHEET



Series: Rockbridge Modular Homes

Model: RY504A Rockbridge Elite 4

## Standards & Features (continued)

### INTERIOR (continued)

- 1.6 Gallon Per Flush Elongated Toilets
  - China Stool, Tank & Lid
  - China Sinks with Overflows and Pop-Up Drains
  - Lighted Vent Fan in Each Bath
  - Huntington Brass Nickel Faucets
  - Anti-Scald Valves on Showers & Tubs
  - Langford 2- Arm Vanity Light
  - Privacy Lock Sets in all Bathrooms
- ### BEDROOMS
- Ceiling Lights
  - Egress Window Each Bedroom
  - Double Wire Shelves with Shoe Racks in All Walk-In Closets
  - Wire Shelving in Secondary Closets
  - 30" Interior Passage Doors
  - Switched Recessed 4" LED Light in All Walk-In Closets
  - Privacy Lock Sets in all Bedrooms

### UTILITIES

- 200 AMP Electrical Service
- Arc Fault Circuit Breakers
- Plumb and Wire for Washer
- Wire and Vent for Dryer
- 40 Gallon Electric Water Heater with Pan
- Air Ready Electric Furnace
- Six Panel Furnace Door
- Perimeter Heat, Fiberglass Ducts, & Return Air System
- Copper Wiring Throughout

### UTILITIES (continued)

- Main Water Line Shut-Off Valve
- Water Shut-Off Valves Where Accessible
- One Exterior Water Faucet
- Recessed Dryer Vent Box - Where Available
- Uponer Plumbing Connections
- Drain & Gas Lines Stubbed Through Floor
- Complete Heat System
- Ceiling Jumper Box HVAC Return Air System

### INSULATION

- R-19 Fiberglass Insulation in Floor
- R-19 Fiberglass Insulation in Walls
- R-31 Avg. Blown Insulation in Ceiling

### EXTERIOR

- Patina Lantern Light at Front & Rear Door
- Two GFI-Protected Exterior Receptacles
- Vinyl Dutch Lap Siding
- O.S.B. Sheathing Under Siding
- 5/12 Roof Pitch
- 10" or 12" Overhangs & Eaves (Depending on Model)
- Architectural Shingles
- Ridgevent Roof Ventilation System
- 38x82 Fiberglass 6-Panel Front Door with Dead Bolt
- 38x82 9-Lite Fiberglass Rear Door with Dead Bolt
- Vinyl Insulated Windows with Low-E Glass
- 15" Raised Panel Shutters on Front

## CUSTOMER CONTACT

Notes:

---

---

---

---

# PRINTABLE INFO SHEET



Series: Rockbridge Modular Homes

Model: RY504A Rockbridge Elite 4

## Standards & Features (continued)

### EXTERIOR (continued)

Door Side

Wind Wrap

Vapor Barrier

### CONSTRUCTION

2x10 Transverse Floor System on

16" Centers with 3/4" T&G O.S.B.

Floor Decking\*\*

Toilet Riser in Wall

2x6 Exterior Walls on 16" Centers\*\*

2x4 Interior Walls

2x4 Marriage Walls

82 1/2" Window Headers

90 MPH Exposure B Wind Load

20# Roof Load Design

### Virginia Built Homes

R-30 Fiberglass Insulation in Floor

R-19 Fiberglass Insulation in Wall

R-38 Avg. Blown Insulation in Ceiling

Foam Gaskets at Switches & Receptacles  
on Exterior Walls

Insulated Hot Water Lines

Deleted Factory Installed Heat Ducts  
and Boots

\*\*Spacing for Framing Members may vary due to Design  
Requirements

## CUSTOMER CONTACT

Notes:

---

---

---

---