

PRINTABLE INFO SHEET

Series: Summit

Model: RAD103A Delwood



About This Model

Style: Ranch / Bedrooms: 3 / Bathrooms: 2 / Square Feet: 1740

CUSTOMER CONTACT

Notes:

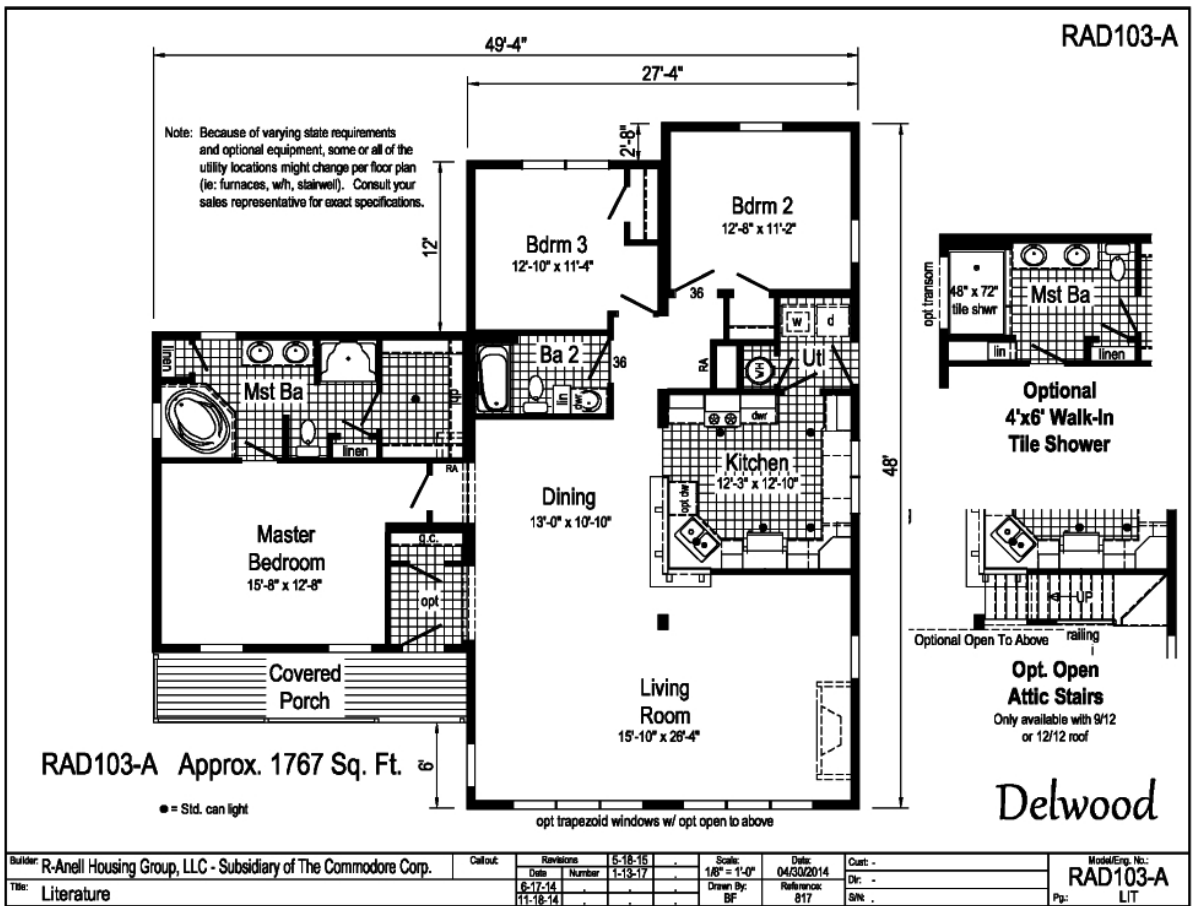
PRINTABLE INFO SHEET



Series: Summit

Model: RAD103A Delwood

Floorplan



CUSTOMER CONTACT

Notes:

PRINTABLE INFO SHEET



Series: Summit

Model: RAD103A Delwood

Standards & Features

INTERIOR

- Primed Smooth Drywall Throughout
- Flat Ceiling Throughout
- Smooth Finish Coveless Ceiling
- 9'-0" Ceiling Height
- 25 oz. Carpet with ShawGuard Carpet Protector
- Rebond Carpet Pad
- Wet Areas Nafco 16x16 Floor Tiles or Volare Plank Flooring
- Langford 5-Arm Dining Room Light
- Langford 3-Arm Alabaster Glass Nook Light
- Pre-Hung Doors w/ Mortise Hinges
- Craftsman White 5-Panel Interior Doors
- Metal Interior Passage Sets
- Floor Mount Door Stops
- Smoke Detectors with Battery Back-Up
- Wire Shelving in Guest Closet & Utility Room
- Craftsman White Painted Mouldings
- Square Stairwell Railing & Posts
- Laminate Countertops with Crescent Edging
- Laminate Backsplash

KITCHEN

- Recessed 6" LED Lighting
- USB Receptacle
- 30" Deluxe Free-Standing Electric Range
- Power Range Hood with Light
- 18 Cubic Foot, No-Frost Refrigerator
- Drop-In Offset Double Bowl Sink
- Brushed Nickel Coil Spring Goose Neck

KITCHEN (continued)

Faucet

CABINETRY

- Evermore Custom Cabinetry (KCMA Certified)
- Hardwood Mission Cabinet Doors with Full Overlay
- Hardwood Cabinet Face Frames
- Brushed Nickel Cabinet Hardware
- Concealed Cabinet Hinges
- Undermount Roller Guide Drawer System
- Dovetail Drawers
- Kitchen Island w/ 3" Stile Framed Panels on Sides & Back
- Lined Overhead Cabinets
- Crown Moulding on Overhead Cabinets
- Hardwood Undercabinet Moulding in Kitchen
- 42" Overhead Cabinets
- Adjustable Shelves in Overhead Cabinets
- Bumped Out Kitchen Sink Cabinet
- Base Shelf in Vanities
- 36" High Bath Vanities

BATHS

- 60" One-Piece Fiberglass Tub/showers with Ceramic Tile Edge
- One-Piece Fiberglass Shower with Ceramic Tile Edge and a Glass Door in Glamour Baths
- Fiberglass Soaker Tub in Glamour Baths
- Tub Overflows
- 1.6 Gallon Per Flush Elongated Toilets

CUSTOMER CONTACT

Notes: _____

PRINTABLE INFO SHEET



Series: Summit

Model: RAD103A Delwood

Standards & Features (continued)

CABINETRY (continued)

- China Stool, Tank and Lid
- China Sinks with Overflows and Pop-Up Drains
- 2-Arm Vanity Light
- Lighted Vent Fan in Each Bath
- Huntington Brass Sherington Faucets
- Anti-Scald Valves on Showers

BEDROOMS

- Ceiling Lights
- Egress Window in Each Bedroom
- Wire Shelving in Secondary Closets
- Switched 4" LED Light in All Walk-In Closets

EXTERIOR

- Prairie Charcoal Lantern Light at Front Door
- Patina Lantern Light at Rear Door
- Two GFI-Protected Exterior Receptacles
- Vinyl Dutch Lap Siding
- Shutters on Front Door Side
- O.S.B. Sheathing
- 7/12 Roof Pitch
- 12" Overhangs & Eaves
- 10" Overhangs & Eaves - RAB Models
- Ridgevent Roof Ventilation System
- 3/0 x 6/8 Fiberglass 1/2 Lite Prairie Grid Front Door w/ Dead Bolt
- 3/0 x 6/8 Fiberglass 6-Panel Rear Door w/ Dead Bolt
- Plygem 62" Single Hung Low-E Windows w/ Prairie Grids
- Wind Wrap

EXTERIOR (continued)

- Vapor Barrier
- Architectural Shingles
- UTILITIES
- 200 AMP Electrical Service
- Arc Fault Circuit Breakers
- 5-Wire A/C Thermostat
- Plumb and Wire for Washer
- Wire and Vent for Dryer
- Perimeter Boots & Registers
- Box Air Return System Through Floor
- 50 Gallon Electric Water Heater with Pan
- Copper Wiring Throughout
- Main Water Line Shut-Off Valve
- Water Shut-Off Valves Where Accessible
- Drain Lines Stubbed Through Floor
- One Exterior Water Faucet
- Recessed Dryer Vent Box - Where Available

CONSTRUCTION

- 2x10 Transverse Floor System on 16" Centers with 3/4" T&G O.S.B. Floor Decking**
- Toilet Riser in Wall
- 2x6 Exterior Walls
- 2x4 Interior Walls
- 2x4 Marriage Walls
- Uponer Plumbing Connections
- 88" Window Headers
- 90 MPH Exposure B Wind Load
- 20# Roof Load Design

CUSTOMER CONTACT

Notes:

PRINTABLE INFO SHEET



Series: Summit

Model: RAD103A Delwood

Standards & Features (continued)

INSULATON

R-19 Fiberglass Insulation in Walls

R-31 Avg. Blown Insulation in Ceiling

Virginia Built Homes

R-19 Fiberglass Insulation in Wall

R-38 Avg. Blown Insulation in Ceiling

Foam Gaskets at Switches & Recept on exterior Walls

Insulated Hot Water Lines

**Spacing for Framing Members may vary due to Design

Requirements

CUSTOMER CONTACT

Notes:
