

Ranch

Cottage

Cape Cod

Traditional

Vacation

Estate

The Whittlebrook

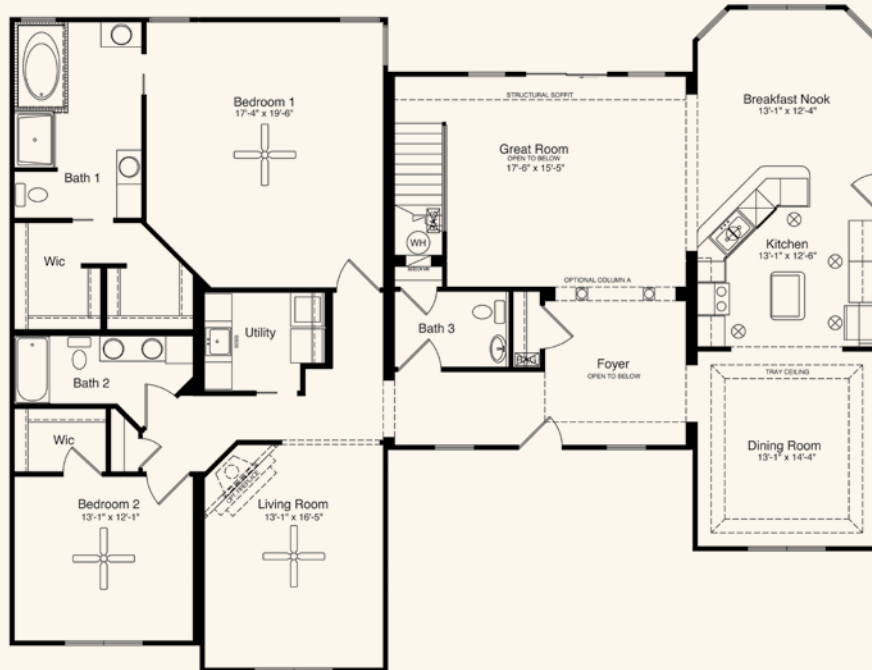
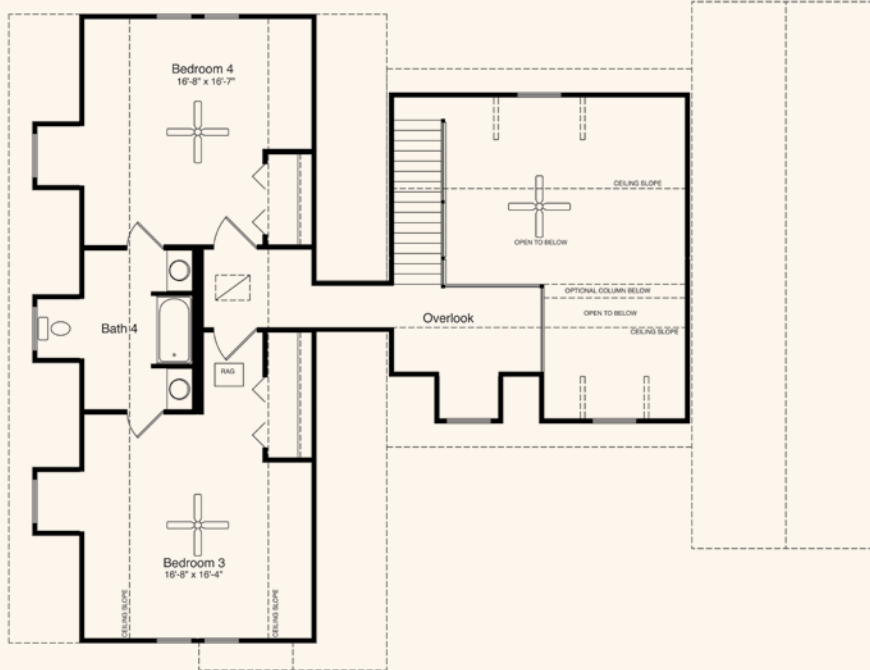


4 Bedrooms, 3.5 Baths
3,415 Living Area
48' x 63'9" Dimensions

This 3,415 square foot, two-story Cape plan consists of a master suite and three additional bedrooms, two on the first floor and two on the second level. The master suite features his and her walk-in closets and a large private bath. The kitchen has a large breakfast nook and attached formal dining room. To complete the first floor, HandCrafted Homes has added a large great room that is open to above, a living room, a utility room and two baths.

HandCrafted Homes

101 Eastern Minerals Rd., Henderson, NC 27537 • 877-424-4321 • 252-436-0001 • HandCraftedHomes.com



All home elevations are artist renderings and may vary from actual construction. All floor plans and room sizes are approximate. All information contained is the sole property of HandCrafted Homes.

The Whittlebrook

HandCrafted Homes

101 Eastern Minerals Rd., Henderson, NC 27537 • 877-424-4321 • 252-436-0001 • HandCraftedHomes.com