

Ranch

Cottage

Cape Cod

Traditional

Vacation

Estate

The Bluffton



3 Bedrooms, 2.5 Baths
1,994 1st Floor, 523 2nd Floor,
2,517 Living Area
32' x 64' Dimensions

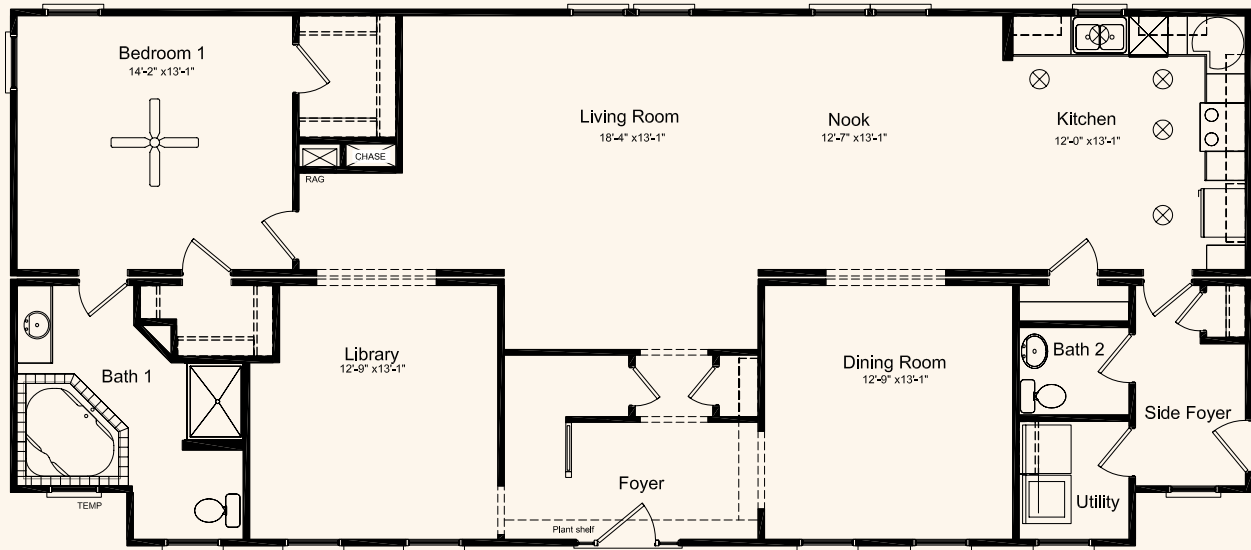
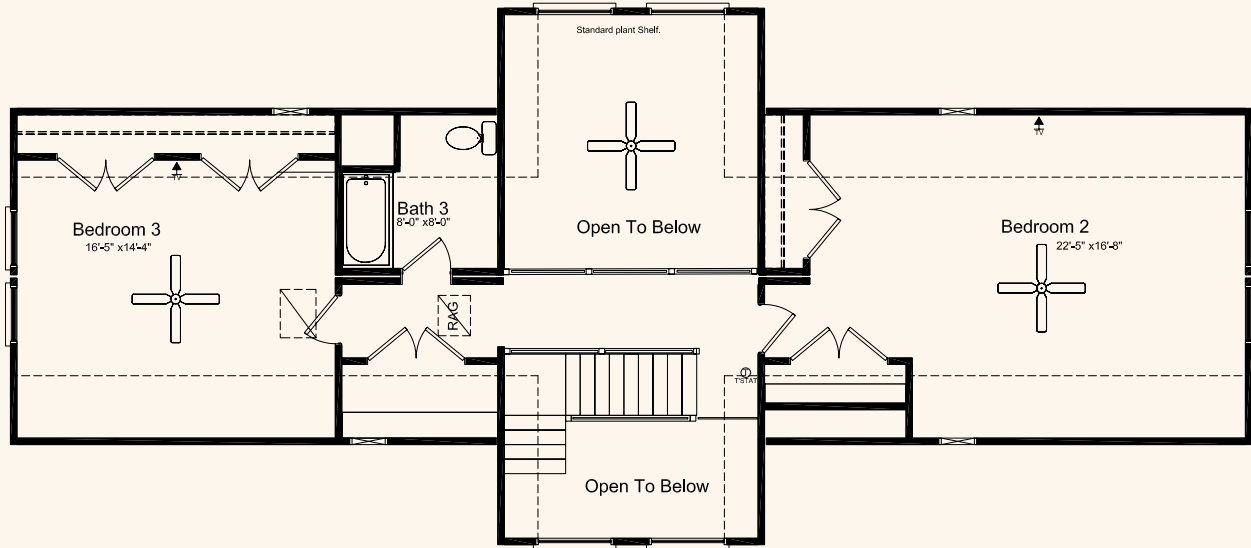


Inspired by the low country areas of the South, this plan offers spacious living in grandiose style. An open foyer and living room with the stair balcony overlooking both areas. The master bedroom, living room, breakfast nook and kitchen areas are situated at the rear of the home with lots of glass to capture those scenic panoramas of water or wilderness.

*Elevation shown with optional oval windows, transoms above front windows, sidelites at front door, elliptical transom above front door, on-site constructed front and rear porches. Bluffton III floorplan is 2,517 sq. ft.

HandCrafted Homes

101 Eastern Minerals Rd., Henderson, NC 27537 • 877-424-4321 • 252-436-0001 • HandCraftedHomes.com



All home elevations are artist renderings and may vary from actual construction. All floor plans and room sizes are approximate. All information contained is the sole property of HandCrafted Homes.

The Bluffton III

HandCrafted Homes

101 Eastern Minerals Rd., Henderson, NC 27537 • 877-424-4321 • 252-436-0001 • HandCraftedHomes.com