

Ranch

**Cottage**

Cape Cod

Traditional

Vacation

Estate

## The Ashton



3 Bedrooms, 2 Baths  
2,068 1st Floor, 1,316 2nd Floor,  
3,384 Living Area  
41'7" x 58' Dimensions



The beauty of The Ashton begins with its curb appeal. Then, upon entering through the front door, the openness of the plan and the sheer size of the first floor living area are immediately apparent. From the open kitchen, breakfast nook and living room area to the master bathroom with tiled shower and tub, this plan does not disappoint. The upstairs can be finished with a massive great room area in addition to two more bedrooms and a full bath.

\*Both elevation shown with optional 4' dormers, center reversed roof gable, optional sidelites at front door and on-site constructed garage. Lower elevation reversed from the plan layout.

**HandCrafted Homes**

101 Eastern Minerals Rd., Henderson, NC 27537 • 877-424-4321 • 252-436-0001 • [HandCraftedHomes.com](http://HandCraftedHomes.com)

Ranch

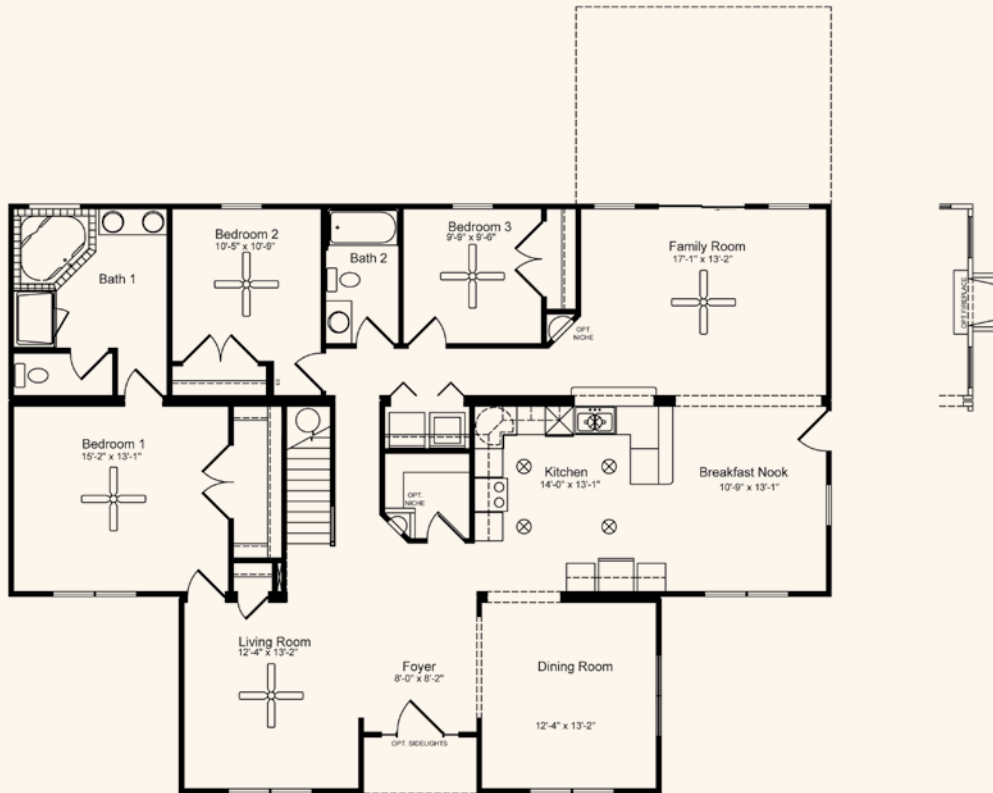
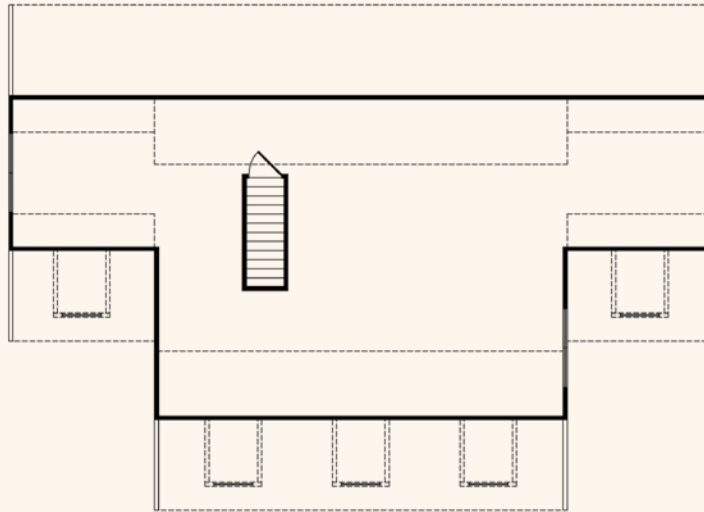
**Cottage**

Cape Cod

Traditional

Vacation

Estate



All home elevations are artist renderings and may vary from actual construction. All floor plans and room sizes are approximate. All information contained is the sole property of HandCrafted Homes.

# The Ashton

**HandCrafted Homes**

101 Eastern Minerals Rd., Henderson, NC 27537 • 877-424-4321 • 252-436-0001 • HandCraftedHomes.com